

# Wireless Wi-Fi

## Dual Channel Wi-Fi™ Specification

**WR-SP-DC-WiFi-I01-190702**

**ISSUED**

### **Notice**

This Wireless specification is the result of a cooperative effort undertaken at the direction of Cable Television Laboratories, Inc. for the benefit of the cable industry and its customers. You may download, copy, distribute, and reference the documents herein only for the purpose of developing products or services in accordance with such documents, and educational use. Except as granted by CableLabs® in a separate written license agreement, no license is granted to modify the documents herein (except via the Engineering Change process), or to use, copy, modify or distribute the documents for any other purpose.

This document may contain references to other documents not owned or controlled by CableLabs. Use and understanding of this document may require access to such other documents. Designing, manufacturing, distributing, using, selling, or servicing products, or providing services, based on this document may require intellectual property licenses from third parties for technology referenced in this document. To the extent this document contains or refers to documents of third parties, you agree to abide by the terms of any licenses associated with such third-party documents, including open source licenses, if any.

© Cable Television Laboratories, Inc. 2019

## DISCLAIMER

This document is furnished on an "AS IS" basis and neither CableLabs nor its members provides any representation or warranty, express or implied, regarding the accuracy, completeness, noninfringement, or fitness for a particular purpose of this document, or any document referenced herein. Any use or reliance on the information or opinion in this document is at the risk of the user, and CableLabs and its members shall not be liable for any damage or injury incurred by any person arising out of the completeness, accuracy, or utility of any information or opinion contained in the document.

CableLabs reserves the right to revise this document for any reason including, but not limited to, changes in laws, regulations, or standards promulgated by various entities, technology advances, or changes in equipment design, manufacturing techniques, or operating procedures described, or referred to, herein.

This document is not to be construed to suggest that any company modify or change any of its products or procedures, nor does this document represent a commitment by CableLabs or any of its members to purchase any product whether or not it meets the characteristics described in the document. Unless granted in a separate written agreement from CableLabs, nothing contained herein shall be construed to confer any license or right to any intellectual property. This document is not to be construed as an endorsement of any product or company or as the adoption or promulgation of any guidelines, standards, or recommendations.

## Document Status Sheet

<b>Document Control Number:</b>	WR-SP-DC-WiFi-D02-190611			
<b>Document Title:</b>	Dual Channel Wi-Fi™ Specification			
<b>Revision History:</b>	W01 – May 2018 D01 – Released 04/12/2019 D02 – Released 06/11/2019 I01 – Released 07/02/2019			
<b>Date:</b>	July 02, 2019			
<b>Status:</b>	<del>Work in Progress</del>	<del>Draft</del>	<b>Issued</b>	<del>Closed</del>
<b>Distribution Restrictions:</b>	<del>Author Only</del>	<del>CL/Member</del>	<del>CL/Member/Vendor</del>	<b>Public</b>

### Key to Document Status Codes

<b>Work in Progress</b>	An incomplete document, designed to guide discussion and generate feedback that may include several alternative requirements for consideration.
<b>Draft</b>	A document in specification format considered largely complete, but lacking review by Members and vendors. Drafts are susceptible to substantial change during the review process.
<b>Issued</b>	A generally public document that has undergone Member and Technology Supplier review, cross-vendor interoperability, and is for Certification testing if applicable. Issued Specifications are subject to the Engineering Change Process.
<b>Closed</b>	A static document, reviewed, tested, validated, and closed to further engineering change requests to the specification through CableLabs.

### Trademarks

CableLabs® is a registered trademark of Cable Television Laboratories, Inc. Other CableLabs marks are listed at <http://www.cablelabs.com/specs/certification/trademarks>. All other marks are the property of their respective owners.

# Contents

<b>1</b>	<b>SCOPE</b>	<b>6</b>
1.1	Introduction and Purpose	6
1.2	Requirements	6
<b>2</b>	<b>REFERENCES</b>	<b>7</b>
2.1	Normative References	7
2.2	Informative References	7
2.3	Reference Acquisition	7
<b>3</b>	<b>TERMS AND DEFINITIONS</b>	<b>8</b>
<b>4</b>	<b>ABBREVIATIONS</b>	<b>9</b>
<b>5</b>	<b>OVERVIEW</b>	<b>10</b>
5.1	Access Point (AP) Requirements	10
5.1.1	Communication	10
5.1.2	Data Channels	10
5.1.3	Dual Channel Client Table	10
5.1.4	Traffic Inspection, Filtering, and Routing	11
5.2	Dual Channel Client (DCC) Requirements	11
5.2.1	Communication	11
5.2.2	DCC Traffic Routing	11
5.2.3	DCC Auto-connecting to DC SSIDs	11
5.3	Dual Channel Client (DCC) Table	11
5.4	Traffic Filter Profile	12
5.4.1	Example Traffic Filter Profile	12
5.5	Process Flows	13
5.5.1	AP Initialization	13
5.5.2	DCC Initialization	13
5.5.3	DCC Disconnect	14
5.5.4	New Downstream Channel	14
5.5.5	DC Move	14
5.5.6	AP PC Disable or Quit	15
5.5.7	AP DC Disable	15
5.6	Message Definitions	15
5.6.1	Protocol Stack	15
5.6.2	General Dual Channel Wi-Fi Message Syntax	16
5.6.3	AP Messages	17
5.6.4	DCC Messages	18
5.7	Message Flows	19
5.7.1	DCC Initialization	19
5.7.2	DCC Disconnect	20
5.7.3	New Downstream Channel	20
5.7.4	DC Move	20
5.7.5	AP PC Disable or Quit	21
5.7.6	AP DC Disable	21
	<b>APPENDIX I ACKNOWLEDGEMENTS (INFORMATIVE)</b>	<b>22</b>

## Figures

Figure 1 - DCC Initialization ("Join") Message Flow .....	19
Figure 2 - DCC Disconnect ("Unjoin") Message Flow .....	20
Figure 3 - New Data Channel Message Flow .....	20
Figure 4 - Data Channel Move Message Flow .....	20
Figure 5 - AP Disconnect Message Flow .....	21
Figure 6 - DC Disable Message Flow.....	21

## Tables

Table 1 - DCC Table Headings .....	12
Table 2 - Traffic Filter Profile Fields.....	12
Table 3 - Protocol message layers .....	15
Table 4 - Example Ethernet Packet Carrying a DCW Message.....	15
Table 5 - Ethernet II Header Syntax .....	16
Table 6 - CL3 Protocol Syntax .....	16
Table 7 - General DCW Message Syntax .....	16
Table 8 - Message ID Types.....	16
Table 9 - ap_resp accept .....	17
Table 10 - ap_resp reject.....	17
Table 11 - ap_ack_disconnect .....	17
Table 12 - ap_quit.....	17
Table 13 - sta_join .....	18
Table 14 - sta_unjoin .....	18
Table 15 - sta_ack.....	18
Table 16 - sta_nack.....	19

# 1 SCOPE

## 1.1 Introduction and Purpose

Dual Channel Wi-Fi (DCW) is a method of increasing the efficiency of delivering data to wireless devices. Dual Channel Wi-Fi was developed to address specific issues with time-critical data delivery such as video and voice data. Although having a high-speed Wi-Fi connection is seen as critical, user experience can be greatly degraded if the data cannot be sent or delivered in a timely manner. The concept behind Dual Channel Wi-Fi is to enable one or more downstream, data-only Wi-Fi channels for communication from the access point (AP) to a Dual Channel Client (DCC). These data-only channels will help ensure that when the AP has data to send to a client, the AP will have no or limited contention for Wi-Fi airtime, thus ensuring timely delivery of the data to the client.

With time-critical data, speed is not the major factor affecting delivery, but rather the ability to send the data without significant delay or the availability of airtime. A Wi-Fi channel is a bisynchronous communication path; that is, the AP and the clients send data on the same channel. This introduces contention among all devices for use of the channel. Wi-Fi does have mechanisms in place to deal with the contention, but this can result in data being buffered at the AP, or the client, and buffering at the AP is the root cause for downstream data delivery delays. By having an asynchronous communication path between the AP and clients—the data channel—the AP will not have to contend with the client for use of the channel, thus reducing or eliminating the need to buffer the data. The result is low-latency, real-time data delivery.

## 1.2 Requirements

Throughout this document, the words that are used to define the significance of particular requirements are capitalized. These words are:

"MUST"	This word means that the item is an absolute requirement of this specification.
"MUST NOT"	This phrase means that the item is an absolute prohibition of this specification.
"SHOULD"	This word means that there may exist valid reasons in particular circumstances to ignore this item, but the full implications should be understood, and the case carefully weighed before choosing a different course.
"SHOULD NOT"	This phrase means that there may exist valid reasons in particular circumstances when the listed behavior is acceptable or even useful, but the full implications should be understood, and the case carefully weighed before implementing any behavior described with this label.
"MAY"	This word means that this item is truly optional. One vendor may choose to include the item because a particular marketplace requires it or because it enhances the product, for example; another vendor may omit the same item.

## 2 REFERENCES

### 2.1 Normative References

In order to claim compliance with this specification, it is necessary to conform to the following standards and other works as indicated, in addition to the other requirements of this specification. Notwithstanding, intellectual property rights may be required to use or implement such normative references.

All references are subject to revision, and parties to agreement based on this specification are encouraged to investigate the possibility of applying the most recent editions of the documents listed below.

- [802.11] IEEE 802.11-2016, IEEE Standard for Information technology—Telecommunications and information exchange between systems Local and metropolitan area networks—Specific requirements Part 11: Wireless LAN Medium Access Control (MAC) and Physical Layer (PHY) Specifications, December 14, 2016.

### 2.2 Informative References

This specification does not use any informative references.

### 2.3 Reference Acquisition

- Cable Television Laboratories, Inc., 858 Coal Creek Circle, Louisville, CO 80027; Phone: +1-303-661-9100; Fax: +1-303-661-9199; <http://www.cablelabs.com>
- Institute of Electrical and Electronics Engineers (IEEE); Phone: +1-800-422-4633 (USA and Canada); <http://www.ieee.org>

### 3 TERMS AND DEFINITIONS

This specification uses the following terms.

<b>access point</b>	Device that connects the Wi-Fi network and the wired network.
<b>data channel</b>	Downstream-only Wi-Fi channel that the AP uses to send data to associated stations/clients.
<b>dual channel client</b>	Wi-Fi station/client that has concurrent Wi-Fi channel capabilities. That is, it consists of two or more channels that can be operated at the same time. This device also has the Dual Channel Wi-Fi functionality.
<b>primary channel</b>	Normal Wi-Fi channel that the AP and station/client use to communicate.
<b>station/client</b>	End device that uses Wi-Fi to connect to the network. For DCW, includes the dual channel client.



## 4 ABBREVIATIONS

This specification uses the following abbreviations.

<b>AP</b>	access point (Wi-Fi)
<b>CL3</b>	CableLabs Layer-3 Protocol
<b>DC</b>	data channel
<b>DCC</b>	dual channel client
<b>DCW</b>	Dual Channel Wi-Fi™
<b>GAS</b>	Generic Advertisement Service
<b>GUI</b>	graphical user interface
<b>IP</b>	Internet Protocol
<b>MAC</b>	media access control
<b>PC</b>	primary channel
<b>SSID</b>	service set identifier
<b>STA</b>	station (or client) (Wi-Fi)
<b>WLAN</b>	wireless local area network

## 5 OVERVIEW

Dual Channel Wi-Fi (DCW) makes use of two or more standard 802.11 Wi-Fi channels. The channels consist of one primary channel (PC) and one or more data channels (DCs). The primary channel is used in the same way that typical 802.11 Wi-Fi channels are currently used. The data channels, however, are used for downstream-only traffic. The data channel is set up as a hidden SSID (service set identifier) and configured to only allow registered dual channel clients to associate to the channel. (More information on the 802.11 standard can be found in [802.11].)

The access point (AP) controls which Wi-Fi channel is used to send data to the dual channel clients (DCCs). The AP selects the channel by using packet inspection and filtering. The filter is configurable to route the traffic destined to the DCCs according to different criteria, such as packet type, packet size, sort IP, sort port, and/or destination port. Based on the results of the packet inspection and filtering, the AP then routes the traffic to the DCC on either the PC or the DC.

The DCC is configured to receive traffic on either the PC or the DC; however, the DCC will only send traffic on the PC.

Because DCCs are the only devices allowed to associate to DCs, and because the DCCs are configured to not use the DC to send data, the AP is the only device within the WLAN (wireless local area network) that is contending for the DC.

The underlying 802.11 protocol is not altered. Generic Advertisement Service (GAS) messages and physical layer exchanges continue to work on the PC and DCs according to the [802.11] specifications.

### 5.1 Access Point (AP) Requirements

The following section covers the requirements for the AP. These requirements cover communication with the DCC, set-up and control of the DCs, tracking the DCC registered on the AP, and traffic filtering and routing.

#### 5.1.1 Communication

The AP communicates to the DCC by using the CL3 (CableLabs Layer-3) protocol, EtherType 0xB4E3, CL3 protocol type 0x00DC. This communication allows the AP to pass commands to the DCC. The communication has the following requirements.

- The AP MUST listen for and transmit CL3 protocol messages containing DCW messages.
- The AP MUST receive both broadcast and unicast CL3/DCW traffic from all devices on the PC.
- The AP MUST accept correctly defined DCW messages and silently discard any unknown messages.

The different message types are defined in Section 5.6.

#### 5.1.2 Data Channels

The data channels (DCs) are used by the AP to send data to the DCCs. The following are the requirements for the DC.

- All DCs MUST have the SSID hidden.
- The DC MUST allow only the registered DCC(s) to associate to the DC.
- Each DC MUST be linked to at least one PC. A DC MAY be linked to more than one PC.

#### 5.1.3 Dual Channel Client Table

The AP MUST keep a record or registry of all the DCC devices that the AP is servicing by means of the Dual Channel Client (DCC) Table, detailed in Section 5.3. The AP MUST make the DCC accessible to the operator side of the device.

### 5.1.4 Traffic Inspection, Filtering, and Routing

The AP MUST be able to inspect traffic for all traffic routed to the WLAN.

If the traffic is directed to one of the associated DCCs, then the AP MUST inspect that data packet to determine if the data packet matches one of the filter settings that are applicable to the DCC. If the data packet matches one of the DCC's applicable filter settings, then the AP MUST use the DC to forward the traffic to the associated DCC. If the data packet does not match one of the DCC's applicable filter settings, then the AP MUST use the PC to forward the traffic to the associated DCC.

The AP MUST be able to filter on at least the following traffic parameters: protocol type, source IP, source port, destination port, and packet size. Additional traffic parameters may be used depending on traffic filter implementation.

The traffic filter configuration file is detailed in Section 5.4.

## 5.2 Dual Channel Client (DCC) Requirements

The DCC MUST support the use of two or more concurrent Wi-Fi channels. They can be configured on two separate radios or on a concurrent radio. The following section covers the requirements for the DCC, which includes communication with the AP and traffic routing.

### 5.2.1 Communication

The DCC communicates to the AP by using the CL3 protocol, EtherType 0xB4E3, CL3 protocol type 0x00DC. This communication allows the DCC to request a DC and acknowledge AP responses as well take other commands from the AP. The communication has the following requirements.

- The DCC MUST listen for and transmit CL3 protocol messages containing DCW messages.
- The DCC MUST broadcast DCW messages on the PC when the AP's MAC address is unknown.
- The DCC MUST filter DCW messages from only the MAC address of the AP that successfully replied to a join, and discard DCW messages from other sources.
- The DCC MUST accept correctly defined DCW messages and silently discard any unknown messages.

The different message types are defined in Section 5.6.

### 5.2.2 DCC Traffic Routing

The DCC MUST accept traffic from the PC and all DCs to which the DCC is associated. The DCC MUST route all upstream traffic over only the PC and not allow any non-802.11 traffic to traverse any DC. Note that all 802.11 response messages are allowed on the DC to ensure correct lower layer operations of the [802.11] protocols.

### 5.2.3 DCC Auto-connecting to DC SSIDs

Due to different connection managers, the DCC may attempt to re-connect to a previously associated DC when the DC is seen by the DCC. In this case, the expected behavior of such actions should result in the association failing based on the AP not having the DCC registered. Whenever the DCC disconnects from a DC, the connection manager should forget the DC to eliminate autoconnections when the DC is seen in the future.

## 5.3 Dual Channel Client (DCC) Table

The DCC Table is used by the AP to track information on the DCCs registered to the AP. The DCC Table contains the MAC address, the DC(s) assigned to the DCC, the DC(s) that the DCC is connected, and the traffic filter profile in use (Table 1).

When the AP receives an STA\_JOIN message from a DCC, the AP MUST determine if there is an entry in the DCC Table for that DCC. If there is already an entry in the DCC Table for the requesting DCC, then the AP MUST use that entry in the table or create a new entry with the same traffic filter profile and delete the old entry. If there is no

entry in the DCC Table for the requesting DCC, then the AP MUST create a new entry and populate it with the default traffic filter profile.

When a DCC disassociates from a DC, the AP MUST delete the entry in the “Associated DC” field in the DCC Table that corresponds to that DCC and DC. This deletion ensures that the AP or users of the DCC Table know that the DCC is no longer associated to that DC and that the DC should not be used to send traffic to the DCC.

**Table 1 - DCC Table Headings**

DCC MAC	Assigned DC(s)	Associated DC(s)	Traffic Profile
---------	----------------	------------------	-----------------

## 5.4 Traffic Filter Profile

The Traffic Filter Profile defines the filter that determines if traffic destined to a DCC is to be put on the PC or one of the DCs. The AP MUST have one default Traffic Filter Profile named “TFP Default”. The AP MAY have additional Traffic Profile Filters with user-readable names.

The Traffic Filter Profile contains the following fields (Table 2). When using IPv6 addresses as the Source IP/Range, the value is required to be within “[ ]”.

**Table 2 - Traffic Filter Profile Fields**

Field Name	Type	Description
IP Packet Size	Number	The length in bytes of the IP data used to match the filter. If the IP data value is equal to or greater than this value, then the packet is considered a match to the filter. Wildcard is " * "
Source IP/Range	IPv4 or IPv6	The source IP used to match the filter; either a single IPv4 address or a single IPv6 address. In the case of IPv4: Range of address using " - " or network mask using " / " In the case of IPv6: Range of address using " - " or mask using " * "
Source Port Number/Range	Ports	The source port or port range used to match the filter. In the case of a range, a " - " is used, or it can be comma separated.
Protocol Type	Readable Protocols	The protocol types used to match the filter. There can be more than one, in which case they are comma separated.
Destination Port Number/Range	Ports	The destination port or port range used to match the filter. In the case of a range, a " - " is used, or it can be comma separated.

### 5.4.1 Example Traffic Filter Profile

The format of the Traffic Filter Profile file should be as shown in the sample below.

```
Format - < IP packet size >:<src ip/range >:<src port number/range>:< protocol type(s) >:<dst port number/range >
```

IP packet size, Source IP, Layer 4 protocol type and source port number.

e.g. 100:10.0.0.1:tcp:80

e.g. 100:10.0.0.1-10.0.0.255:udp:4000-5000

e.g. 100:10.0:0.1/24:80:tcp:\*

Use \* to specify any.

e.g. \*:\*:tcp:6000

e.g. 100:10.0.0.1::\*:3000-4000

Use multiple source values for multiple source filter rules

Maximum 10 rules supported.

Supported Layer 4 protocols: tcp and udp

## 5.5 Process Flows

This section defines the process flows for the different scenarios by which the AP connects, disconnects, and reassigns DCs to the DCC. See Section 5.7 for summaries of the message flows for these processes.

### 5.5.1 AP Initialization

The AP initialization process is as follows.

- After a factory reset or fresh clean boot, the user configures the PC through any method, such as a web-based graphical user interface (GUI) or command-line interface.
- After configuring the PC, the operator or user then configures one or more DCs. As part of the configuration of the DC, the user links the DCs to one or more PCs.
- The user can then update the default Traffic Filter Profile and add any additional traffic profiles.
- The user can then set known devices to specific traffic profiles.
- The AP MUST retain the PC and DC settings across a restart or reboot of the AP if this is the standard operating procedure of the AP. The AP MUST NOT retain the PC and DC settings upon a factory reset of the AP.

### 5.5.2 DCC Initialization

The DCC associates to a Wi-Fi channel through an SSID manually selected by the user or through an automated function of the DCC, which can use either a previously connected SSID or a feature such as Hotspot 2.0. DCC association uses the following process flow.

- After successfully connecting to the Wi-Fi channel (PC), the DCC MUST start broadcasting STA\_JOIN messages at an interval to attempt automatic discovery of the DCW-capable AP. The DCC MUST broadcast STA\_JOIN messages that include a list of all the DCC's DC MAC addresses.
- The AP MUST determine if there is an available DC(s) and, if so, link the DC(s) to the DCC.
- The AP MUST send the DCC an AP\_REJECT\_STA message if there is no available DC or if the AP is unable to proceed for any reason.
- The AP MUST allow the DCC to associate to the linked DC(s).
- The AP MUST send the DCC an AP\_ACCEPT\_STA message with the information about the DC(s).
- The AP MUST monitor for the STA\_ACK message from the DCC. If the message is not received within the STA\_ACK\_TIMEOUT time frame, then the AP MUST send the DCC an AP\_REJECT\_STA message, unlink the DC from the DCC, and not allow the DCC to associate to the DC.
- The DCC MUST attempt to associate to the DC SSID(s) that are included in the AP\_ACCEPT\_STA message.
- If the DCC is able to successfully complete the association and have the DC(s) fully operational, then the DCC MUST send the AP an STA\_ACK message.
- If the DCC is unable to successfully complete the association or have the DC(s) fully operational, then the DCC MUST send the AP an STA\_NACK message.
- If the DCC is unable to support a fully operational connection to the DC(s), then the DCC MUST disassociate from any DC(s) to which the DCC is associated.

- When the DCC associates to the DC(s), the AP MUST update the DCC Table to indicate to which DC(s) the DCC is associated.
- The AP MUST NOT transmit traffic destined for the DCC on the DC(s) until it receives the STA\_ACK message.

### 5.5.3 DCC Disconnect

If the DCC needs to disconnect from a DC, then the disconnect process is as follows.

- If the DCC needs to disconnect from a DC, the DCC MUST first send the AP the STA\_UNJOIN message listing all the DCC's DC MAC addresses that the DCC is disconnecting.
- When a DCC sends an STA\_UNJOIN message, the AP MUST delete the entry in the "Associated DC" field in the DCC Table that corresponds to that DCC and DC(s) and ensure that traffic is no longer flowing to any of the DCC's listed DC MAC addresses.
- When a DCC sends an STA\_UNJOIN message, the AP MUST send the DCC the AP\_ACK\_DISCONNECT message.
- When the DCC receives the AP\_ACK\_DISCONNECT message, the DCC MUST disassociate from the DC(s).
- The AP MUST NOT allow the DCC to associate to the DC(s) from which the DCC disconnected until the AP has reissued a new AP\_ACCEPT\_STA message.

### 5.5.4 New Downstream Channel

If the AP needs to inform a registered DCC of a newly added DC, in order to support use of multiple DCs, then the following actions are performed.

- If the AP needs to inform a registered DCC of a newly added DC, the AP MUST send the currently registered/joined DCC an AP\_ACCEPT\_STA message listing both the existing connected DC SSID(s) and the newly available DC SSID(s).
- The DCC MAY attempt to associate to the newly available DC(s) included in the AP\_ACCEPT\_STA message.
- When the DCC associates with the newly available DC(s), the AP MUST update the DCC Table to indicate the DC(s) to which the DCC is associated.
- If the DCC is able to successfully complete the association and have the DC(s) fully operational, then the DCC MUST send the AP an STA\_ACK message.
- If the DCC is unable to successfully complete the association or have the DC(s) fully operational, the DCC MUST send the AP an STA\_NACK message.
- The AP MUST NOT transmit traffic destined for the DCC on the new DC(s) until it receives the STA\_ACK message.

### 5.5.5 DC Move

If the AP determines that a DCC needs to move to a different DC, then the following actions are performed.

- If the AP determines that a DCC needs to move to a different DC, the AP MUST ensure all traffic flowing to the DCC is moved back to the PC.
- If the AP determines that a DCC needs to move to a different DC, the AP MUST send a unicast AP\_QUIT message to the DCC.
- When the DCC receives the AP\_QUIT message from the AP, the DCC MUST disassociate all DC(s).
- After the DCC disassociates all DC(s), the DCC MUST restart the DCC initialization process, detailed in Section 5.5.2.

### 5.5.6 AP PC Disable or Quit

When a PC is being disabled or the AP is being reset, the following actions are performed.

- When a PC is being disabled or the AP is being reset, the AP MUST broadcast the AP\_QUIT message before disabling the PC.
- After disabling the PC, the AP MUST delete all entries in the “Associated DC” fields in the DCC Table that correspond to that PC and all DCCs associated to it.
- Once the PC is disabled or the AP is reset, the DCC MUST disassociate from all DCs.

### 5.5.7 AP DC Disable

When a DCC is connected to multiple DCs and the AP will disable one or more DCs, the following actions are performed.

- When a DCC is connected to multiple DCs and the AP will disable one or more DCs, the AP MUST ensure all traffic is moved off the DC(s) being disabled.
- The AP MUST send the DCC an AP\_ACCEPT\_STA message listing only to the active DC(s) that will be available moving forward.
- The DCC MUST disassociate from all DC(s) not listed in the received AP\_ACCEPT\_STA message.
- The DCC MUST send the AP an STA\_ACK message when it has disassociated from the DC(s) not listed.
- The AP MUST delete the entries in the “Assigned DC” and “Associated DC” fields in the DCC Table that correspond to that DCC and the disabled DC(s).

## 5.6 Message Definitions

The messages that are exchanged between the AP and DCCs are used to control the DCs that a DCC should use. This section defines all the messages that are exchanged and the message types.

### 5.6.1 Protocol Stack

**Table 3 - Protocol message layers**

Dual Channel Wi-Fi Message
CL3
Ethernet
Wi-Fi

Messaging for Dual Channel Wi-Fi is intended to be carried in-band over the CL3 protocol. The CL3 protocol is used in place of a more widely deployed layer-3 protocol such as IPv4 or IPv6 because the AP is not guaranteed to have an accessible IPv4 or IPv6 address on the PC. Using the CL3 protocol also simplifies addressing, as only the endpoint MAC addresses are used.

**Table 4 - Example Ethernet Packet Carrying a DCW Message**

<b>FF FF FF FF FF FF</b>	<b>00 11 22 33 44 55</b>	<b>B4 E3</b>	<b>11 00</b>	<b>00 DC</b>	<b>...</b>	<b>...</b>
Destination MAC Address 6 bytes	Source MAC Address 6 bytes	EtherType 2 bytes	Version Length 2 bytes	Protocol Type 2 bytes	Msg ID 1 byte	Message Fields
<b>Ethernet</b>			<b>CL3 Protocol</b>		<b>DCW Message</b>	

### 5.6.1.1 Ethernet II Header Syntax

The Dual Channel Wi-Fi messaging MUST be carried by using the Ethernet II (DIX) framing format.

**Table 5 - Ethernet II Header Syntax**

Element Name	Length	Units	Value	Description
dst_macaddr	6 bytes	hex	MAC Addr	The destination MAC address intended to receive this frame.
src_macaddr	6 bytes	hex	MAC Addr	The source MAC address that is the origin of this frame.
ethertype	2 bytes	hex	0xB4E3	The type of payload carried in the Ethernet frame. For CL3 + DCW, use value 0xB4E3, big-endian.

NOTE: To broadcast a message to all devices, the entry in the “dst\_macaddr” field may be FF FF FF FF FF FF.

### 5.6.1.2 CL3 Syntax

The general-purpose CableLabs Layer-3 (CL3) protocol is used to encapsulate the Dual Channel Wi-Fi message.

**Table 6 - CL3 Protocol Syntax**

Element Name	Length	Units	Value	Description
version_num	4 bits	hex	0x1	The version number of the protocol.
header_size	4 bits	hex	0x1	The size of the CL3 header in 32-bit words. For example, a value of 0x1 would give a total header size of 4 bytes. (0x1 * 4)
rfu	1 byte	Hex	0x00	Reserved for future use. Required to be all zeros.
protocol	2 bytes	Hex	0x00DC	The CL3 protocol to use. For Dual Channel Wi-Fi, use 0x00DC, big-endian.

### 5.6.2 General Dual Channel Wi-Fi Message Syntax

The general syntax of the messages exchanged between the AP and DCC is as follows.

**Table 7 - General DCW Message Syntax**

Element Name	Length	Units	Value	Description
msg_id	1 byte	hex	Type of DCW MSG	Specifies the ID/type of Dual Channel Wi-Fi message being carried.
...	...	...	...	Message-specific fields

#### 5.6.2.1 Message ID Type Summary

This table summarizes the known message ID types.

**Table 8 - Message ID Types**

Name	Value	Sender	Description
STA_JOIN	0x01	DCC	Initiates a DCW connection
STA_UNJOIN	0x02	DCC	Removes channels from a DCW connection.
STA_ACK	0x11	DCC	Notifies the AP that the DCC's data channels have been bonded to the specified AP's SSIDs.
STA_NACK	0x12	DCC	Notifies the AP that data channels on the DCC have not been bonded.
AP_ACCEPT_STA	0x21	AP	Notifies the DCC of which data channels it may use.
AP_REJECT_STA	0x22	AP	Notifies the DCC that it may not use DCW.
AP_ACK_DISCONNECT	0x41	AP	Notifies the DCC that it has acknowledged its “unjoin” request.
AP_QUIT	0x99	AP	Notifies all clients that the AP is no longer operating in DCW mode.



### 5.6.3 AP Messages

The following messages are generated by the AP.

#### 5.6.3.1 AP\_ACCEPT\_STA

The AP\_ACCEPT\_STA message is sent from the AP to the DCC in response to a successful STA\_JOIN request.

**Table 9 - ap\_resp accept**

Element Name	Length	Units	Value	Description
msg_id	1 byte	hex	0x21	AP_ACCEPT_STA
num_data_ssid	1 byte	hex	Count	Count of SSID strings that follow this field.
data_ssid_len_1	1 byte	hex	Length	Number of bytes for the SSID string that follows this field.
data_ssid_1	n byte	ASCII	DC SSID	SSID string of the data channel with which the DCC may associate.
data_ssid_len_n	1 byte	hex	Length	Number of bytes for the SSID string that follows this field.
data_ssid_n	n bytes	ASCII	DC SSID	SSID string of the data channel with which the DCC may associate.

#### 5.6.3.2 AP\_REJECT\_STA

The AP\_REJECT\_STA message is sent from the AP to the DCC in response to an unsuccessful/rejected STA\_JOIN request.

**Table 10 - ap\_resp reject**

Element Name	Length	Units	Value	Description
msg_id	1 byte	hex	0x22	AP_REJECT_STA
num_data_macaddr	1 byte	hex	Count	Count of DCC data channel MAC addresses that follow this field.
data_macaddr_1	6 bytes	hex	DCC Data Macaddr	DCC data channel MAC address
data_macaddr_n	6 bytes	hex	DCC Data Macaddr	DCC data channel MAC address

#### 5.6.3.3 AP\_ACK\_DISCONNECT

The AP\_ACK\_DISCONNECT message is sent from the AP to the DCC to acknowledge an STA\_UNJOIN message received from the DCC. The AP MUST have removed the associated DC from the DCC Table before sending the AP\_ACK\_DISCONNECT message.

**Table 11 - ap\_ack\_disconnect**

Element Name	Length	Units	Value	Description
msg_id	1 byte	hex	0x41	AP_ACK_DISCONNECT

#### 5.6.3.4 AP\_QUIT

The AP\_QUIT message is sent from the AP to the DCC to signal that it is stopping all DCW functions. Upon receiving this message, the DCC should disassociate from all DCs.

**Table 12 - ap\_quit**

Element Name	Length	Units	Value	Description
msg_id	1 byte	hex	0x99	AP_QUIT

## 5.6.4 DCC Messages

The following messages are generated by the DCC.

### 5.6.4.1 STA\_JOIN

The STA\_JOIN message is the initial message sent from the DCC to the AP to request DCs. The DCC MUST send the STA\_JOIN message upon completing a connection to a PC.

**Table 13 - sta\_join**

Element Name	Length	Units	Value	Description
msg_id	1 byte	hex	0x01	STA_JOIN
num_data_macaddr	1 byte	hex	Count	Count of DCC data channel MAC addresses that follow this field
data_macaddr_1	6 bytes	hex	DCC Data Macaddr	DCC data channel MAC address
data_macaddr_n	6 bytes	hex	DCC Data Macaddr	DCC data channel MAC address

### 5.6.4.2 STA\_UNJOIN

The STA\_UNJOIN message is sent from the DCC to inform the AP that it is disassociating from a DC. This could be the result of an AP-initiated disconnect, a “soft” shutdown, or the DCC determining that the DC is no longer usable.

**Table 14 - sta\_unjoin**

Element Name	Length	Units	Value	Description
msg_id	1 byte	hex	0x02	STA_UNJOIN
num_data_macaddr	1 byte	hex	Count	Count of DCC data channel MAC addresses that follow this field.
data_macaddr_1	6 bytes	hex	DCC Data Macaddr	DCC data channel MAC address
data_macaddr_n	6 bytes	hex	DCC Data Macaddr	DCC data channel MAC address

### 5.6.4.3 STA\_ACK

The STA\_ACK message is sent from the DCC to acknowledge AP messages. The table included in the message is used to inform the AP of successful bonds between certain DCC DC MAC addresses and certain AP SSIDs.

**Table 15 - sta\_ack**

Element Name	Length	Units	Value	Description
msg_id	1 byte	hex	0x11	STA_ACK
num_bonded_channel	1 byte	hex	Count	Count of bonded channels that follow this field.
data_macaddr_1	6 bytes	hex	DCC Data Macaddr	DCC data channel MAC address
data_ssid_len_1	1 byte	hex	Length	Number of bytes for the SSID string that follows this field.
data_ssid_1	n bytes	ASCII	DC SSID	SSID string of the data channel that is bonded to the DCC data channel MAC address.
data_macaddr_n	6 bytes	hex	DCC Data Macaddr	DCC data channel MAC address
data_ssid_len_n	1 byte	hex	Length	Number of bytes for the SSID string that follows this field.
data_ssid_n	n bytes	ASCII	DC SSID	SSID string of the data channel that is bonded to the DCC data channel MAC address.

#### 5.6.4.4 STA\_NACK

The STA\_NACK message is sent from the DCC to inform the AP that it has not completed bonding the DCC MAC addresses to the data channel SSIDs provided in the previous ap\_resp message (AP\_ACCEPT\_STA).

**Table 16 - sta\_nack**

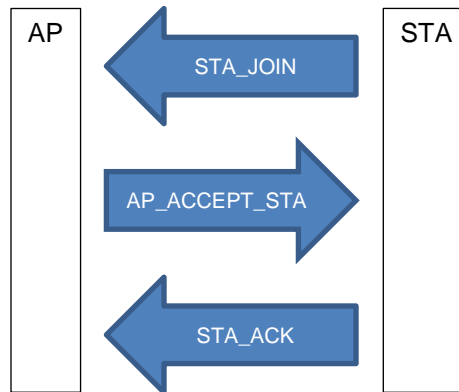
Element Name	Length	Units	Value	Description
msg_id	1 byte	hex	0x12	DCWMSG_STA_NACK
num_data_macaddr	1 byte	hex	Count	Count of DCC data channel MAC addresses that follow this field.
data_macaddr_1	6 bytes	hex	DCC Data Macaddr	DCC data channel MAC address
data_macaddr_n	6 bytes	hex	DCC Data Macaddr	DCC data channel MAC address

## 5.7 Message Flows

The following subsections summarize the message flows for the processes covered in Section 5.5. The processes include when the DCC starts up from power on or restart, when there is a change in the assigned DCs, when a DCC is disconnecting from the PC, and other scenarios.

### 5.7.1 DCC Initialization

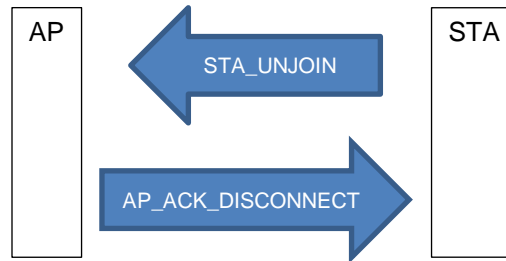
Figure 1 shows the message flow for the process the DCC completes connecting to an SSID. This connection can be through either a manual connection or an automatic connection, such as a preset SSID or Hotspot 2.0.



**Figure 1 - DCC Initialization ("Join") Message Flow**

### 5.7.2 DCC Disconnect

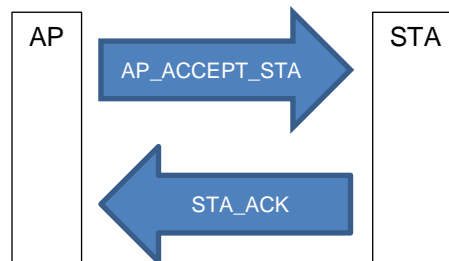
Figure 2 shows the message flow for the process of the DCC disconnecting from one or more DCs. The need to disconnect could be caused by the DCC either manually or automatically disconnecting from the PC or determining that the selected DC is unusable.



**Figure 2 - DCC Disconnect ("Unjoin") Message Flow**

### 5.7.3 New Downstream Channel

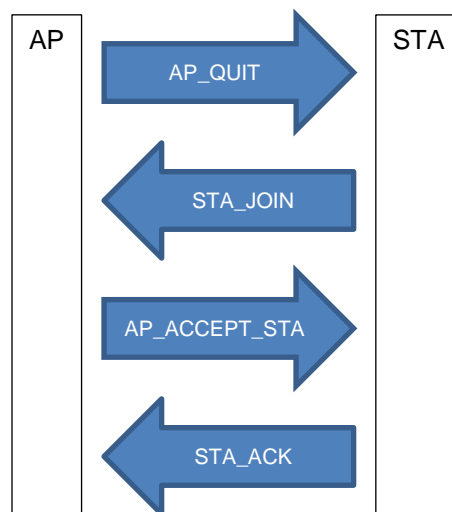
Figure 3 shows the message flow for the process of the AP signaling the STA to join a new DC.



**Figure 3 - New Data Channel Message Flow**

### 5.7.4 DC Move

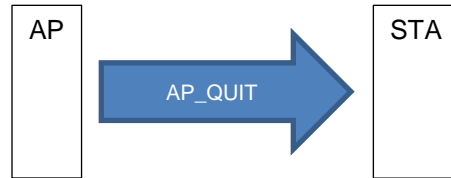
Figure 4 shows the message flow for the process of the AP signaling the STA to move one or more DC.



**Figure 4 - Data Channel Move Message Flow**

### 5.7.5 AP PC Disable or Quit

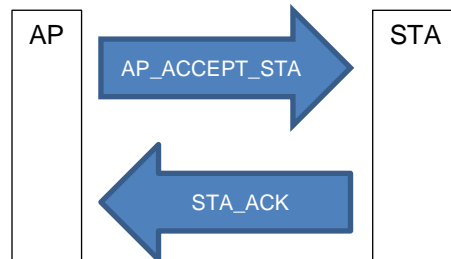
Figure 5 shows the message flow for the process of the AP shutting down or resetting.



**Figure 5 - AP Disconnect Message Flow**

### 5.7.6 AP DC Disable

Figure 6 shows the message flow for the process of disabling a DC.



**Figure 6 - DC Disable Message Flow**

## **Appendix I      Acknowledgements (Informative)**

We wish to thank the following participants who contributed directly to this document.

<b>Contributor</b>	<b>Company Affiliation</b>
Luther Smith	CableLabs
Jon Dennis	CableLabs

\* \* \*